



# NACAD Polyclonal Antibody

<b>Catalog No</b>	YP-Ab-04028
<b>Isotype</b>	IgG
<b>Reactivity</b>	Human;Rat;Mouse;
<b>Applications</b>	WB;IHC
<b>Gene Name</b>	NACAD
<b>Protein Name</b>	NAC-alpha domain-containing protein 1
<b>Immunogen</b>	The antiserum was produced against synthesized peptide derived from human NACAD. AA range:376-425
<b>Specificity</b>	NACAD Polyclonal Antibody detects endogenous levels of NACAD protein.
<b>Formulation</b>	Liquid in PBS containing 50% glycerol, 0.5% BSA and 0.02% sodium azide.
<b>Source</b>	Polyclonal, Rabbit,IgG
<b>Purification</b>	The antibody was affinity-purified from rabbit antiserum by affinity-chromatography using epitope-specific immunogen.
<b>Dilution</b>	WB 1:500-2000;IHC-p 1:50-300
<b>Concentration</b>	1 mg/ml
<b>Purity</b>	≥90%
<b>Storage Stability</b>	-20°C/1 year
<b>Synonyms</b>	NACAD; KIAA0363; NAC-alpha domain-containing protein 1
<b>Observed Band</b>	140kD
<b>Cell Pathway</b>	Cytoplasm . Nucleus .
<b>Tissue Specificity</b>	Brain,
<b>Function</b>	function:May prevent inappropriate targeting of non-secretory polypeptides to the endoplasmic reticulum (ER). May bind to nascent polypeptide chains as they emerge from the ribosome and block their interaction with the signal recognition particle (SRP), which normally targets nascent secretory peptides to the ER. May also reduce the inherent affinity of ribosomes for protein translocation sites in the ER membrane (M sites).,similarity:Belongs to the NAC-alpha family.,similarity:Contains 1 NAC-A/B (NAC-alpha/beta) domain.,
<b>Background</b>	function:May prevent inappropriate targeting of non-secretory polypeptides to the endoplasmic reticulum (ER). May bind to nascent polypeptide chains as they emerge from the ribosome and block their interaction with the signal recognition particle (SRP), which normally targets nascent secretory peptides to the ER. May also reduce the inherent affinity of ribosomes for protein translocation sites in the ER membrane (M sites).,similarity:Belongs to the NAC-alpha family.,similarity:Contains 1 NAC-A/B (NAC-alpha/beta) domain.,



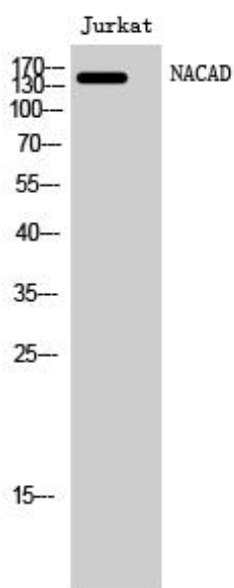
**matters needing attention**

Avoid repeated freezing and thawing!

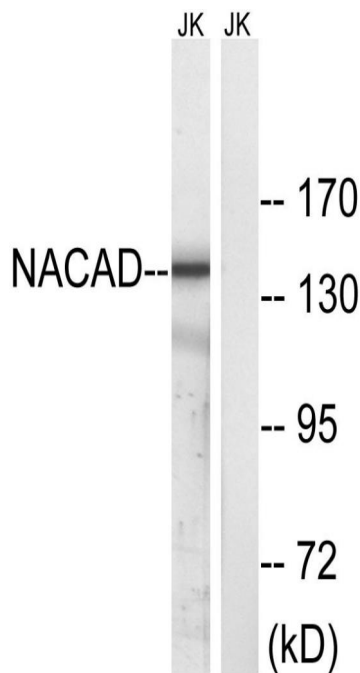
**Usage suggestions**

This product can be used in immunological reaction related experiments. For more information, please consult technical personnel.

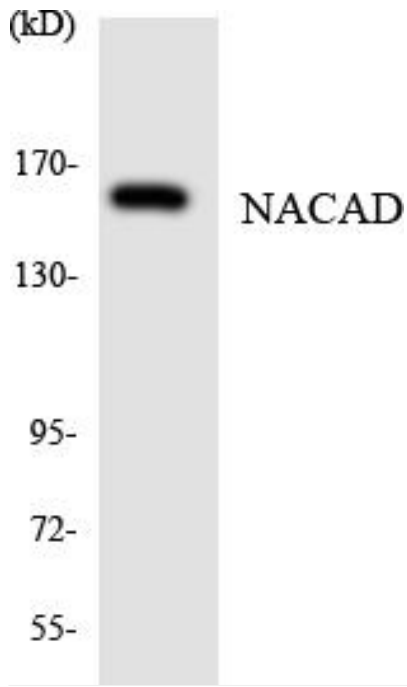
**Products Images**



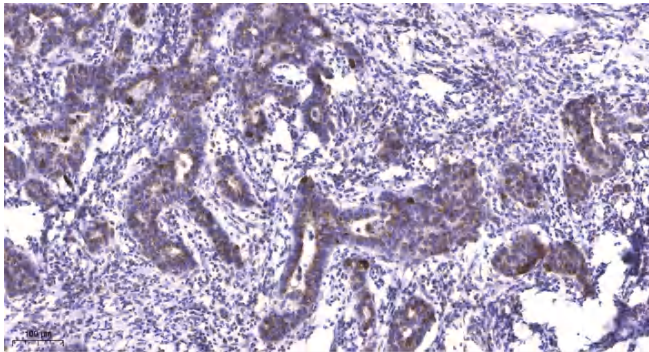
Western Blot analysis of Jurkat cells using NACAD Polyclonal Antibody



Western blot analysis of lysates from Jurkat cells, using NACAD Antibody. The lane on the right is blocked with the synthesized peptide.



Western blot analysis of the lysates from HeLa cells using NACAD antibody.



Immunohistochemical analysis of paraffin-embedded human Breast cancer. 1, Antibody was diluted at 1:200(4° overnight). 2, Tris-EDTA,pH9.0 was used for antigen retrieval. 3,Secondary antibody was diluted at 1:200(room temperature, 45min).